

**TRINITY MEMORIAL CHURCH
444 PENNSYLVANIA AVENUE WEST
WARREN, PENNSYLVANIA**

ANNUAL REPORT

**ANNUAL PARISH MEETING
JANUARY 24, 2010**

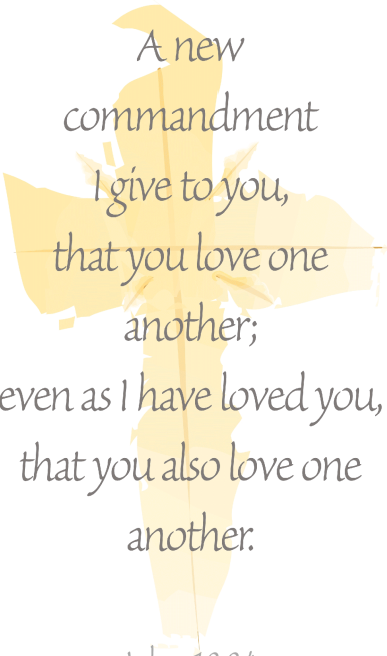
AGENDA

- 1.) Opening Prayer
- 2.) Necrology

*Bernetta P. Brant
Donna M. Check
Rita R. Gibson*

- 3.) Approval of Minutes
- 4.) 2009 Treasurer's Report, 2010 Budget
- 5.) Elections to Vestry
- 6.) Other Business
- 7.) Adjourn

Following our annual meeting we will all gather downstairs for lunch and then proceed with the "Day of Discovery" led by the Search Committee and The Rev. Canon Martha Ishman.



A new
commandment
I give to you,
that you love one
another;
even as I have loved you,
that you also love one
another.

John 13:34

Minutes of the Annual Meeting

January 25, 2009, 10:40 am

1. Adam opened the meeting with prayer.
2. All stood and remembered those members of our parish who passed away in 2008, giving thanks for the life and witness of Margaret "Peg" Steele, Leander "Chet" Lake, Ann Lesser, E. Robert Glarner, Anne P. Mallinson, and Marie L. Covell. Not listed in the annual report was Harley See, may they rest in peace.
3. The minutes from the meeting held January 27, 2008 were presented for approval. A motion was made, seconded and approved to accept the minutes as written.
4. Treasurer Pat Hesch gave an overview of the proposed 2009 budget. He said that the income to operate the church comes from the endowment fund and from member contributions. Roughly 50% comes from the endowment fund interest and 50% comes from member contributions. In 2008 and 2009 we have seen an increase from pledges, and Pat went on to say that is great; however due to the stock market decline the endowment is down to about 1.5 million from about 2.3 million dollars. We have been using the interest from the endowment to pay our bills. We need to increase income and decrease expenses in order to the pay bills, continue ministries, and not depend on the endowment funds.

Questions were raised by those in attendance and discussed.

Adam pointed out that over the past 5 years the endowment has provided around \$800,000 for operating expenses and capital improvements. He went on to explain, that last week the Vestry met for their annual retreat and took a close look at the budget. In order to balance the budget they looked at various expenses including reductions in staffing; however, the vestry was not willing to do these things at this time.

Adam reported that the proposed cuts for the 2009 budget are mostly programs and projects. We will be asking people to fund their own projects and if any one has issues financially then we can talk about it.

5. Adam reported on the building renovations which were discussed during the January 17th Vestry Retreat. It was decided that we would not go forward with the plans to build an elevator or create a ground level entrance to the building. The minimum cost would be \$600,000 to build and connect to the existing building. To date the Capital Stewardship Fund raised \$315,930 which is great, but in order to go ahead with the project we need an additional \$150,000 - \$250,000 that would either come from a loan or the endowment. Following a lengthy discussion the vestry decided it would not be in our best interest to go forward with the building project as planned.

We will put together a much smaller project that would be overseen by a building committee. The smaller scale project will include plaster repairs, plumbing, pulling up basement rugs, and a new dishwasher in the kitchen. We will also explore the idea of a lift from the first floor to the basement.

We will ask that those who made three-year commitments to the capital campaign to make an one year commitment, which would be one third of their commitment. We then could make necessary repairs that would be more affordable. Because we are changing the project, if people would not want to contribute it would be understood.

We are going to sell the A&B building and Bill's buildings to Kurt Smith. In order for us to keep those buildings it would cost \$7,000-\$10,000 annually in taxes and other expenses. The vestry has looked at other options but felt this was the best way to go. There were many questions and a lengthy discussion on the buildings.

Adam stated that in order for a parish this size to grow we need about 50 leaders. We have 70 active communicants which means that if we are to grow everyone needs to be involved.

6. Elections to Vestry – There are four openings. Nominees are Sharon Drennen, Elaine Rhodes, Pat Hesch, and Bill Shultz. Adam reported that at Diocesan Convention the new Constitution and Canons which govern parishes, established that there will be no limits to the number of terms that a person can serve on vestry therefore Elaine Rhodes has agreed to serve another term. Pat Hesch served as treasurer in 2008 and has agreed to serve as Senior Warden; therefore he needs to be elected to Vestry. A motion was made, seconded, and approved to cast a ballot of unanimous consent for these nominees.
7. Other Business-Adam asked if there was any other business for the good of the order. No other business was discussed.
8. A motion was made, seconded and approved to adjourn.

Respectfully submitted,

Mary Lou Campbell

Parish Clerk

**Trinity Memorial Episcopal Church
444 Pennsylvania Avenue
Warren, PA 16365**

**ANNUAL MEETING
January 24, 2010**

**Interim Rector's Report:
The Rev Alan P Coudriet**

Wow – what a year at Trinity Memorial! Your former Rector, The Rev. Adam Trambley resigned and left during the summer, not really being in the parish after the end of May, due to other Church activities and vacation. You had a wonderful celebration on his last Sunday in July. My arrival in late August kept the change dynamics alive.

Since my arrival as your part-time Interim Rector, we have gone through some transition. Some persons have had to grieve the loss of your former Rector and some still do. Some members had to adjust to having a new priest here. Of course, my sermons kept everyone on their toes...or was that looking at their watches?

In late November during each of the Church services I did an exercise with you compiling multiple pages of things you have to celebrate here at Trinity. Those sheets are still around if you should wish to review them. But, what wonderful lists! I don't feel like I need to here re-hash all of the accomplishments. God is clearly acting in and through willing disciples in this place. I am proud to be among you.

Likely the most important priority and dynamic in the life of the parish, continuing in a sense the state of transition, is the move to begin a search for a new Rector. Over the last few months the Vestry and I have had contact with the diocese, specifically with the Rev. Canon Martha Ishman and initiated a "Search process" to find suitable persons to be your next Rector. As December ended, 7 people had made that commitment and were appointed by the Vestry to serve as your Search Committee. Real work and training will begin for them in January with Canon Ishman. Those persons are: Diane Brant, Chair, Denise Ely, Clare Glarner, Skye Hill, Tom Jensen, Dick Klancher and Jocelin Thomas. Please hold them in your prayers! 2010 promises to be an exciting year.

In late 2009 a few matters developed which will carry effect into 2010. One Vestry member was replaced: Jim McCollough was appointed to replace resigned Bill Schultz on the vestry as well as Junior Warden. Further late year Vestry resignations came from Sharon Drennen and Leslie Baldensperger. The Vestry has not acted yet to fill those two open seats, but plans to do so after the Annual Meeting.

The formation of a "Music Program" was headed up by Senior Warden Pat Hesch. He will speak of this in his own report.

Efforts were made in the late year to begin addressing some problems in the church and parish hall buildings. This began after a Vestry decision to close the Capital Campaign that was initiated two years ago and to create a Trinity Building Fund. Persons may now contribute to that fund if inclined. A list of building priorities was made and given to the incoming Junior Warden. A roofing leak was fixed, the external

basement doors were sealed to keep out cold air and the locks repaired, various small plumbing repairs made, windows fixed and more. Please see the Junior Warden for further details.

A few things were delayed. Much discussion happened in late 2009 about trying to get a Sunday School back in operation, but action has been delayed. Updating of pictures of former Rectors has yet to be accomplished. Discussion and some initial investigation into installing security cameras was made but has stalled at present. Much discussion occurred among Vestry members and other parishioners of course as to what financial package the Vestry could offer for a new priest. The Vestry felt it best to instruct the Search Committee to be looking for a priest who would meet the criteria of packages for one to two years experience, or possibly the two to four years package. Also a Strategic Planning Meeting needed to be delayed until into 2010, until a new Vestry is in place (it made no sense to have in late 2009). One is scheduled for mid-February 2010.

With the rebound of the Stock Market the parish's endowment Funds have improved in late 2009. This was a great concern and had been a partial cause for deficits in recent time. If the market continues, the Vestry anticipates little or no deficit in 2010.

A general hope for 2010 is to "Call" a new Rector in the late Spring and to have that person here July. Of course plans sometimes require adjustments, but that is a current hope. Also in 2010, the parish will find it needs to move on matters related to the expanding music ministry aimed at children, the Sunday School (teachers and attendance), and establishing parameters for adults with children – adoption of Sexual Misconduct Prevention Training and related parish policies, and of course further matters related to the upkeep of the facility. It will be a year of much positive work and growth.

Various parishioners have spoken with me about an improved attitude among the congregation. I can only hope that to be true, but to also flower and bear fruit. My witness is that you have much to offer a new priest, but more importantly to God and God's mission.

I close with a request for your prayers. Please hold the Search committee and Vestry in your daily prayers as they search for your next priest. Please also pray for me that I may discern what God is Calling me to next. May God bless and keep each of you and I am blessed to be among you for a while.

Yours faithfully,

Alan P. Coudriet +
Interim Rector

Sr. Warden's Report - Pat Hesch

This past year has been a challenging one. Father Adam was called to Sharon, Father Alan was called to be our interim and we have selected our search committee. Those serving on the search committee are Diane Brant, Denise Ely, Clare Glarner, Skye Hill, Dick Klancher, Tom Jensen, and Jocelin Thomas. Our search process is under way and we all need to pray for the committee and this process.

The following is a summary of what was accomplished in 2009 and plans for 2010:

- ◆ The Search Process will be a priority. The search committee will be trained by Canon Martha Ishman, a Day of Discovery is being held for the congregation's input. Bishop Sean and Canon Martha will also provide leadership. Our goal is to have a new rector by August 2010. It's in God's hands, so not to worry.
- ◆ The budget is nearly balanced due to the generous pledges and the interest income from our endowment is up due to the stock market return. Keep in mind we are nearly balanced with paying only a part-time interim rector salary and benefits. One way to increase our income is to grow our congregation. More on that later.
- ◆ In February 2010 we will be beginning our Sunday School program. There will be 2 classes with an additional a program for the parents. Giving our children a good Christian background is also a priority.
- ◆ Our Parish Bible Study will be continued and expanded using the Forward Day by Day booklet.
- ◆ Three "Concerts of Prayer" are scheduled for 2010: March 20, June 19, and September 18. Prayer is our way to communicate with God.
- ◆ Acolyte classes will be conducted to give our children the opportunity to serve at the altar. Children are and will also read lessons and serve as ushers.
- ◆ We currently have \$130,665 in the Trinity Building Funds. A priority list has been started. We will continue to take care of the health of our building. Terry Brant and Bill Shultz have done extensive plaster work throughout the building. Quotes are being sought for repairs in the larger areas. The building is in good hands with the expertise of Jim McCollough and Terry Brant. Work bees to clean up, fix up and to paint various rooms are being planned.
- ◆ The Trinity Music Program will be expanded in 2010. We will continue to give free guitar lessons and have added a state of the art recording studio for our children. A proposed outline of the program is listed at the end of my report. The recording studio will be a growth area for not only Trinity but the whole community. One thing that is evolving from the music is a Youth Group. We also plan to have the children perform at nursing homes. The beauty of this program is low cost, with potentially high impact. Thanks be to God! A music committee is being formed. Members include Pat Hesch, Kathy Bowley, Ellen Scalise, Paul Boger and Rose Mary Landon. If you're interested, please contact me.
- ◆ Thanks to everyone for the tremendous effort in 2009. The Vestry will be doing their own strategic planning session in February to determine short term and long term goals for the parish. To accomplish our goals, again, we're going to need everyone to step forward, take part and help in 2010. We've

noticed our church attendance was down last year. That's an easy one to correct. Would you all start coming on a regular basis? For those who left, we need you back. What's in the past is behind us and we're moving forward. Another goal is to grow the congregation both spiritually and in size. Another easy one. If we all brought just one new member we would double our parish size. Invite them to church, to a bible study, Lenten Program, free guitar lessons, recording studio, etc. Another way would be offer the Forward Day by Day booklet and join our parish bible study. This is an offer of prayer and fellowship. It's that simple.

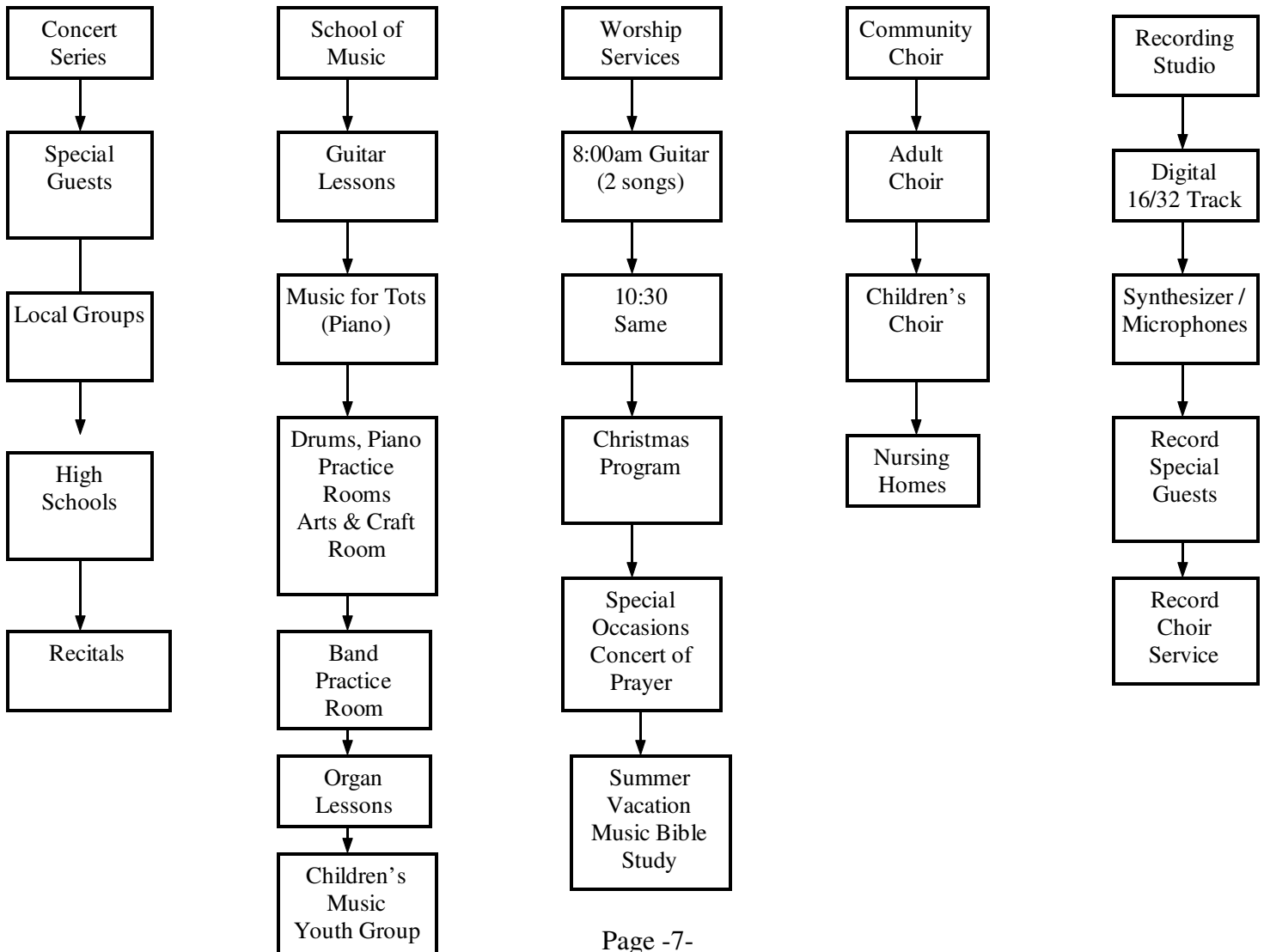
What does Trinity Memorial mean to me? It means I am a part of a big family. A good example of our parish family was our very successful Christmas Pageant. I love coming on Sundays to see my family. There are no better friends than friends in Christ. The bottom line is spreading the Good News of Jesus Christ. Lots of work ahead. Can't wait to see the fruits of our labor.

As always you're ideas and suggestions are welcome and you can contact any vestry member.

PRAYER, MUSIC, FELLOWSHIP AND GROWING OUR CHURCH FAMILY,
SOUNDS LIKE A PLAN TO ME.

SEE YOU IN CHURCH!!!

PROPOSED TRINITY MUSIC PROGRAM (2010)



Jr. Warden's Report - Jim McCollough

In November 2009, I was asked to serve on Vestry and take over the position of Junior Warden. Since then the windows in the nursery have been repaired by replacing the glass were needed and installing new hardware. Lights in the secretary's office have been replaced and Barb is no longer in the dark. A lock was placed on the new youth music room on the second floor and new door hardware installed on the first floor restroom.

Earlier in the year the Bicycle Bill's Buildings were cleaned out and bicycles were saved and given to many children in need. A preventive back flow water device was installed by Warren Webster as was required by the water company and two new hot water tanks and a new door closer on the front doors were installed by Terry Brant. In addition, Bill Shultz and Terry Brant did plaster work in various areas throughout the church

I look forward to various projects being completed this year to include a new commercial grade dishwasher, updating the paint in both restrooms on the first floor, the parlor, and also the dining area. Clare Glarner has offered to help with color choices. Also, work bees are being planned, with hopefully the first one being held in April. See you then!!

Groups & Ministries

Adult Bible Study and Prayer

Monday - 7:00 PM

A Women's Study Group meets in the parlor on Monday evenings. Each evening starts with prayer for our rector, deacon, church family, community, family and friends. We pray for all needs and give praise and thanksgiving to our Lord. The Holy Spirit is so close as we study God's word. The love of our Lord joins us in our prayers and we would love for you to join us.

Thursday - 6:00 PM

A Men's Bible study meets every Thursday on the second floor. Our primary purpose is to gather as Christian men to study God's word in order to better understand ourselves and our faith. Extensive (or any) knowledge of scripture is not required. Our other and equally important purpose is to provide an opportunity for men to develop God centered relationships with one another. The relationships that have been formed over the past years have truly been a blessing, not only to us as a group, but also to the church as a whole. If this sounds like something you or someone you know would be interested in, please feel free to join us. We would love to have you.

Wednesday Morning Service - 10:00 AM

Every Wednesday morning we gather for Eucharist or Morning Prayer. Many share a cup of coffee together beforehand, or stay afterwards to help put together the newsletter or other mailings. All are encouraged to join us for our common prayer and whatever else develops.

Knitting Group - Wednesdays - 11:00 AM

Knitters meet weekly to knit, pray, and enjoy fellowship. We have yarn and needles available if you would like to learn how to knit. For the couple of years we have knit mittens to be handed out to children with the Thanksgiving food baskets. Other projects have been prayer shawls, and hats & scarves for the Seamen's Institute ministry in New York City. Anyone who enjoys knitting or other needle crafts is welcome to join us.

Trinity Healing Ministry (THM)

The five prayer ministers (Deacon Gail Winslow, Barb Winslow, Clare Glarner, Mary Lou Campbell and Diane Brant) continue to offer hands-on healing prayer Sunday's at 9:15 AM between the early and late services and at other times by appointment. We meet at noon on Wednesdays for prayer in the chapel, after which we are again available for hands-on prayer. On Saturday's some of us, along with other interested parishioners, pray in the chapel, the sanctuary and throughout the church.

We are planning three Concerts of Prayer in 2010. All will be held a 3:00PM on the third Saturday of March (20th), June(19th) and September (18th). A time of fellowship and breaking bread together will follow each Concert of Prayer.

The Prayer Request cards which started from the very first Concert of Prayer are available and we continue to ask parishioners to submit their prayer requests.

Altar Guild

Directress - *Barbara Willis*, Flowers - *Ann Soderberg*

The Altar Guild of Trinity Memorial Church has an active membership of 16. The membership is divided into four groups. Each group serving 13 weeks out of the year.

It is the responsibility of the members to prepare the altar for all services held in the church under the direction of the rector. Also, they are responsible for the care of the linens, silver, candles, and vestments. At the close of the Sunday services, the altar flowers are taken by the Altar Guild members to the hospital, nursing homes and shut-ins.

Arrangements for the Altar flowers may be made by calling Ann Soderberg at 723-8257. Anyone wishing to give a memorial may contact the church office.

The following is a list of the Altar Guild members: Sylvia Anderson, Donna Ball, Mary Lou Campbell, Donna Harman, Linda Jensen, Stacy Jones, Addy Landrio, Chris Mesmer, Connie Michell, Marcy O'Brien, Ellen Scalise, Dee Stewart, Mary Lou Watt, Barbara Willis, Susan Wolfe, and Marya Yurick. New members are welcome at anytime.

Trinity Women's Guild

Donna Ball, president; Connie Michell, secretary; Barb Winslow, treasurer.

Trinity Women's Guild gathers for fellowship and support by having dinners in the dining room or dining out n the 3rd Wednesday of the month. In July we host the Chauatuqua Tea where we always enjoy meeting old and new friends. Each year we award scholarships to those pursuing higher education. These funds come from parishioner donations and our investment income. We look looking forward to new projects for Trinity and the Warren community this year.

Trinity Music - Paul Crouch, Organist-choirmaster

The choir sings at the 10:30 service from the first Sunday after Labor Day through Trinity Sunday. Rehearsals are held at 9:00 every Sunday morning during this period to prepare the anthems, hymns and service music that form an important part of Trinity's worship. In addition, the choir participates in the Christmas Eve late service and the Easter Vigil. We have a wonderful group of singers who willingly give their time to enrich our worship, and I am grateful for their dedication and enthusiasm. Membership is open to those who enjoy

singing and are willing to be faithful in attendance. Anyone who is unable to make a long-term commitment is welcome to participate for a limited period, such as the Advent and Christmas season, or during Lent and Easter.

Our fine organ was built in 1959 by the internationally respected Holtkamp Organ Company of Cleveland, Ohio. It consists of 2,083 wood and metal pipes organized into 42 ranks and 32 stops, or tone colors. Trinity maintains a contract with Rothenbueger and Ploetz Pipe Organ Service of Clarence, New York, to provide routine tuning and maintenance, as well as additional service or emergency repairs as needed.

Stewardship

According to the Book of Common Prayer (p. 856), *The duty of all Christians is to follow Christ; to come together week by week for corporate worship; and to work, pray, and give for the spread of the kingdom of God.*

For 2010 we have received 51 pledges for a total of \$108,276 of those 21 pledges came from people who responded to God with increased giving. A stewardship commitment is vital for the spread of the Kingdom of God and for personal spiritual growth. As you read through this report you will see how the members of our church use their gifts and talents to serve and follow Christ.

2009 Treasurer's Report and 2010 Budget

Beginning Balance	(\$1,466)		\$8,240
	2009	2009	2010
	Actual	Budget	Budget
INCOME			
Member Contributions	\$128,548	\$135,948	\$124,545
Other	\$3,134	\$2,500	\$2,000
Plate	\$1,305	\$1,500	\$1,200
	\$132,987	\$139,948	\$127,745
Income from Endowment	\$109,330	\$77,831	\$83,632
Total Income	\$242,317	\$217,779	\$211,377
EXPENSES			
Building			
Bldg. Maintenance Contract	\$2,500	\$2,500	\$2,500
Cleaning service	\$8,190	\$8,190	\$8,190
Cleaning Supplies	\$531	\$1,200	\$900
Equipment-Small tools	\$468	\$250	\$250
General Insurance	\$8,545	\$11,675	\$8,684
Minor Repair	\$3,682	\$500	\$500
Snow Shoveling	\$217	\$300	\$300
Utilities	\$13,875	\$19,000	\$18,000
	\$38,008	\$43,615	\$39,324
Office			
Equipment	\$1,501	\$1,500	\$1,500
Supplies	\$4,387	\$3,000	\$4,000
Postage	\$1,873	\$2,000	\$2,000
Telephone	\$1,182	\$1,200	\$1,000
	\$8,943	\$7,700	\$8,500
Other			
Misc.	\$138	\$150	\$150
Outreach			
Diocesan Assessment	\$44,002	\$44,002	\$46,202
Outreach:	\$10,670	\$13,995	\$12,775
	\$54,672	\$57,997	\$58,977
Programs & Parish			
Advertising	\$113	\$0	\$0
Altar Guild	\$361	\$500	\$500
Education	\$377	\$500	\$500
Convention/Vestry Retreat	\$828	\$1,000	\$1,000
Fellowship	\$216	\$0	\$200
Music	\$152	\$0	\$200
Organ/Piano Maintenance	\$915	\$1,500	\$1,500
Worship Aids	\$336	\$250	\$500
	\$3,298	\$3,750	\$4,400

	2009	2009	2010
	Actual	Budget	Budget
Staff Benefits			
Clergy Continuing Education	\$2,917	\$2,916	\$1,238
Deacon Reimbursement	\$738	\$750	\$750
FICA (church)	\$3,214	\$3,243	\$3,243
Income Replacement Insurance	\$173	\$192	\$192
Interim Rector - Housing	\$2,308	\$2,308	\$7,500
Interim Rector - Pension	\$1,467	\$1,761	\$3,169
Interim Rector - Prof. Exp	\$172	\$750	\$1,688
Interim Rector - S.E.T.	\$524	\$524	\$1,251
Lay Pension	\$3,815	\$3,815	\$3,815
Medical & Life Insurance	\$15,530	\$18,379	\$14,344
Organist Continuing Education	\$750	\$750	\$750
Rector's Housing & Utilities	\$9,760	\$9,760	\$3,945
Rector Pension	\$6,685	\$6,685	\$2,344
Rector's Prof. Exp.	\$2,688	\$3,200	\$1,125
Rector's Self Employment Tax	\$2,741	\$2,741	\$925
Worker's Comp.	\$921	\$1,200	\$1,000
	\$54,403	\$58,974	\$47,279
Salaries			
Interim Rector	\$4,542	\$4,542	\$8,854
Organist	\$18,270	\$18,270	\$18,270
Rector	\$26,070	\$26,070	\$8,151
Secretary	\$24,267	\$24,117	\$24,117
Supply Clergy	\$0	\$0	\$0
Supply Organist	\$0	\$0	\$0
	\$73,149	\$72,999	\$59,392
Total Expenses	\$232,611	\$245,185	\$218,022
Difference (Inc. - Exp.)	\$9,706	(\$27,406)	(\$6,645)
Ending Balance	\$8,240		\$1,595

2009 - 2010 Budget Annotations

Income

Member Contributions - Offerings designated as Pledges, offerings made but no pledge card signed

Other - Interest on the checking account and other misc. donations (eg. group meetings, votive candles, Christmas, Easter offerings, etc.)

Plate - Free will offerings from Services not credited to specific people. (Second Sunday each month is designated to the Discretionary Fund.)

Endowment - Income generated from the endowment fund for the operating budget

Expenses

Building Expenses

Building Maintenance Contract - Fiske & Sons yearly inspection, replace light bulbs in sanctuary, etc.

Cleaning Service - Outsourcing the church cleaning to a professional cleaning service

Cleaning supplies - paper products, ice melt, light bulbs, etc.

Equipment- Small tools- Hammer, screwdrivers, etc.

General Insurance - Insurance for building and extended liability

Minor Repairs - Routine maintenance for buildings and grounds

Snow Shoveling - Clearing church sidewalks and porch as needed

Utilities - Gas, water, electric, garbage pick-up, alarm, etc.

Office Expenses

Equipment - Maintenance, repair, and replacement of office machines, internet

Supplies - Office supplies: paper, toner, computer supplies, etc.

Postage - Stamps, bulk mailing of newsletter and permit

Telephone - Telephone expenses for the office.

Other

Miscellaneous expenses -

Outreach

Diocesan Assessment - Recommended by Diocesan Council and Convention and accepted by the Vestry on behalf of the Parish -- Our fair share to help defray the cost of operating the Diocese of Northwestern Pennsylvania and the National Episcopal Church.

Outreach - Funds to be used for outreach into the greater community.

Program and Parish Expenses

Advertising - Using various media so others may know our mission & ministry

Altar Guild - Altar Guild/worship supplies: wine, wafers, vestment cleaning, etc.

Education - Curriculum and supplies needed for all educational programs from the Pre-School to the Adult programs.

Convention - Expense reimbursement for delegates to the Diocesan Convention, Vestry retreat.

Fellowship - Coffee, tea, meals, etc.

Music - Music, memberships, etc.

Organ/Piano Main. - Maintenance agreement - inspected & repaired, if necessary

Worship Aids - ex. Forward Day by Day

Staff Benefits

Clergy Continuing Ed - Continuing education for the Rector, Deacon

Organist continuing Ed - Continuing education for Organist - figure set by parish.

Clergy Pension- Rector's Pension (based on 18% of salary, housing, Social Security reimbursement)

Deacon Reim. - Automobile and other professional expense reimbursement for the Deacon -

FICA - Social Security for staff

Income replacement Insurance - for lay employees

Lay Pension - Pension of staff based on 9% of salary of lay employees

Medical & Life Ins. - Insurance - health, accident, life - for Rector and staff

Rector's Housing & Utilities - Housing is 30% of stipend & Utilities - \$1500

Rector's Professional Expense - Automobile and other professional expenses reimbursement

Rector's SET - One half self-employment tax of Rector

Worker's Comp- Worker's compensation

Salaries

Organist/Choir Director

Rector

Secretary

Supply Clergy- Stipend for clergy supply when interim priest is away

Supply Organist- Stipend for substitute organist when organist is away

Endowment Trust Fund - PNC Bank

Fund Value	at Market	at Cost
Beginning Value 1/1/2009	\$1,556,623	\$1,799,277
Ending Value 12/31/2009	<u>\$1,726,586</u>	<u>\$1,625,398</u>
Change in Value	\$169,963	(\$173,879)

Fund Operation - January 1 - December 31, 2009

Dividends & Interest Earned	\$ 45,680	
Other Investment Income	\$1,769	
Security Sales	<u>(\$99,859)</u>	
		(\$52,410)
Management Fees	\$11,371	
Other Investment Expense	\$768	
Pay out to Operating Fund	<u>\$109,330</u>	
		<u>(\$121,469)</u>
Net Operating		(\$173,879)

Trinity Women's Guild Investment at PNC

Fund Value	at Market	at Cost
Beginning Value 1/1/2009	\$14,430	\$16,865
Ending Value 12/31/2009	<u>\$17,573</u>	<u>\$16,331</u>
Change in Value	\$3,143	(\$534)

Fund Operation - January 1 - December 31, 2009

Dividends & Interest Earned	\$420	
Security Sales	<u>(\$658)</u>	
		(\$238)
Management Fees	\$96	
Pay Out for Scholarship	<u>\$200</u>	
		<u>(\$296)</u>
Net Operating		(\$534)

Trinity Women's Guild Treasurer's Report

Balance Checking Account, January 1, 2009	\$103.00
Balance Savings/Scholarship Account, January 1, 2009	<u>18.85</u>
	\$121.85

Receipts

Tags Sales	\$ 2.50	
Donations to the Scholarship Fund	\$250.00	
Transfer from TWG Endowment	<u>\$200.00</u>	
		\$452.50

Disbursements

Scholarships	\$500.00	
Safe Place Basket supplies	<u>31.81</u>	
		<u>(\$531.81)</u>

Balance Checking Account, December 31, 2009	\$23.69
Balance Savings/Scholarship Account, December 31, 2009	<u>18.85</u>
	\$42.54

Memorial Fund

Balance - January 1, 2009

Altar Guild Memorial	\$540.25
Betty Currie Memorial	\$2,747.74
General Memorial	<u>\$5,065.80</u>
	\$8,353.79

Receipts: Memorials/Calendars \$1173.00

Expenses:
General Memorial -\$514.99

Balance - December 31, 2009

Altar Guild	\$913.25
Betty Currie Memorial Fund	\$2,747.74
General Memorial Fund	<u>\$5,350.81</u>
	\$9,011.80

Trinity Youth Fellowship

Checking account balance January 1, 2009	\$750.19
Checking account balance December 31, 2009	\$750.19

Trinity Discretionary Fund Investment

Beginning Balance 1/1/2009 **\$0.00**

Income Invested (Goumas Bequest) \$22,500

Realized Loss (\$101)

Ending Balance 12/31/2009 **\$23,299**

Trinity Discretionary Fund

Beginning Balance January 1, 2009 **\$2,173.92**

Income Sources

Parishioners Donations	\$2,955.00	
Weddings/Funerals	250.00	
Plate Offering- 2 nd Sunday of mo.	362.47	
Camp Scholarship	<u>75.00</u>	\$3,642.47

Expenses

Diocesan	\$270.00	
Local - Rent/Utilities	1,990.36	
Medical	30.00	
Gas Cards	500.00	
Mission Trip	400.00	
Camp Scholarships	900.00	
Transient Assistance	<u>98.59</u>	<u>(\$4,188.95)</u>

Ending Balance December 31, 2009 \$1,627.44

Outreach monies were used for the following ministries in 2009:

Local

▶ Warren State Hospital Indigent Patients	\$200.00	
▶ Warren County Jail Ministry	\$200.00	
▶ The Crossing	\$500.00	
▶ Assisted family in need	\$520.00	
▶ Warren Area Student Union	\$1,000.00	
▶ A Safe Place	\$1,000.00	
▶ Marienville - Nursing Home Ministry	\$1,000.00	
▶ Salvation Army	<u>\$1,500.00</u>	
		\$5,920.00

Greater Community

▶ Second Harvest Food Bank	\$400.00	
▶ St. Andrews Church	<u>\$500.00</u>	
		\$900.00

International

▶ Center Fabio, Ivory Coast	\$3,650.00	
▶ Christian Children's Fund-Nameni	<u>200.00</u>	
		<u>\$3,850.00</u>

Total **\$10,670.00**

Transient Fund Balance

Food Pantry/Vouchers	\$2,212.00
Decoration Fund	\$625.00
Flowers	\$110.00
Mother's Group	\$8.00
Camp Scholarship	\$300.00
Youth Music Program	\$1258.00
Luncheons	\$116.00
Special Offering	<u>\$776.00</u>
Balance	\$5,405.00

Other Funds - 2009	Balance			Balance
	1/1/09	Income	Expense	12/31/09
Capital Improvement Fund - <i>Income is from vestry transfer of bequests, special donations - \$3628, capital stewardship campaign - \$68,332; Expenses incurred for architects fees -\$9225 and improvements made to our physical plant - \$1032.</i>	\$-36,488	\$71,960	\$10,257	\$25,215
Columbarium Fund - <i>Income is from individuals purchasing a niche, expense for engraving of plaques.</i>	\$1,088	\$275	\$5	\$1,358
Clergy Continuing Education Fund - <i>Income and expenses for Father Adam Trambley</i>	\$633	\$2,050	\$2,636	\$47
Clergy Continuing Education Fund - <i>Income and expenses for Deacon Gail Winslow</i>	\$958	\$1,635	\$1,424	\$1,169
Clergy Continuing Education Fund - <i>Income and expenses for Father Alan Coudriet</i>	\$0	\$167	\$0	\$167
Health Care Plan Fund - <i>Employees withhold tax advantaged dollars for valid non-insurance reimbursed medical expenses. Fund shows income and expense flow.</i>	\$0	\$1,412	\$1,412	\$0
Marienville Project - <i>Income and expenses involved for establishing a church in Marienville - travel, etc.</i>	\$700	\$1,000	\$1,434	\$266
Music Program Fund - <i>Donations made specifically for the music program, expenses for purchases as directed by the choir director or organist.</i>	\$252	\$38	\$0	\$290
New Building Fund - <i>Income received from Kurt Smith for purchase of A&B & Bicycle Bills Buildings - \$41,280. From rummage sale- Bicycle Bill's - \$1716; Expenses are for dumpster rentals - \$978, Back sewage liens at Bill's - \$231, Attorney fees for sale of buildings \$503.</i>	\$64,165	\$42,997	\$1,712	\$105,450
Organist Continuing Education Fund - <i>Income and expenses for Organist Paul Crouch</i>	\$585	\$750	\$85	\$1,250
Outreach Grant Fund - <i>Income represents donations from meal recipients \$189 and Diocesan grants - \$15,500 . Expenses are for the meal & food basket programs.</i>	\$395	\$15,689	\$8,365	\$7,719
Reimbursement Fund - <i>In and out money for books, supplies, etc by parishioners</i>	\$17	\$2,953	\$3,044	\$-74
Transient Fund - <i>Non budget flow of funds for designated accounts - in/out - altar flowers, decorations, food pantry, special offerings, etc.</i>	\$29,412	\$28,558	\$52,565	\$5,405

